

# zortrax inventure



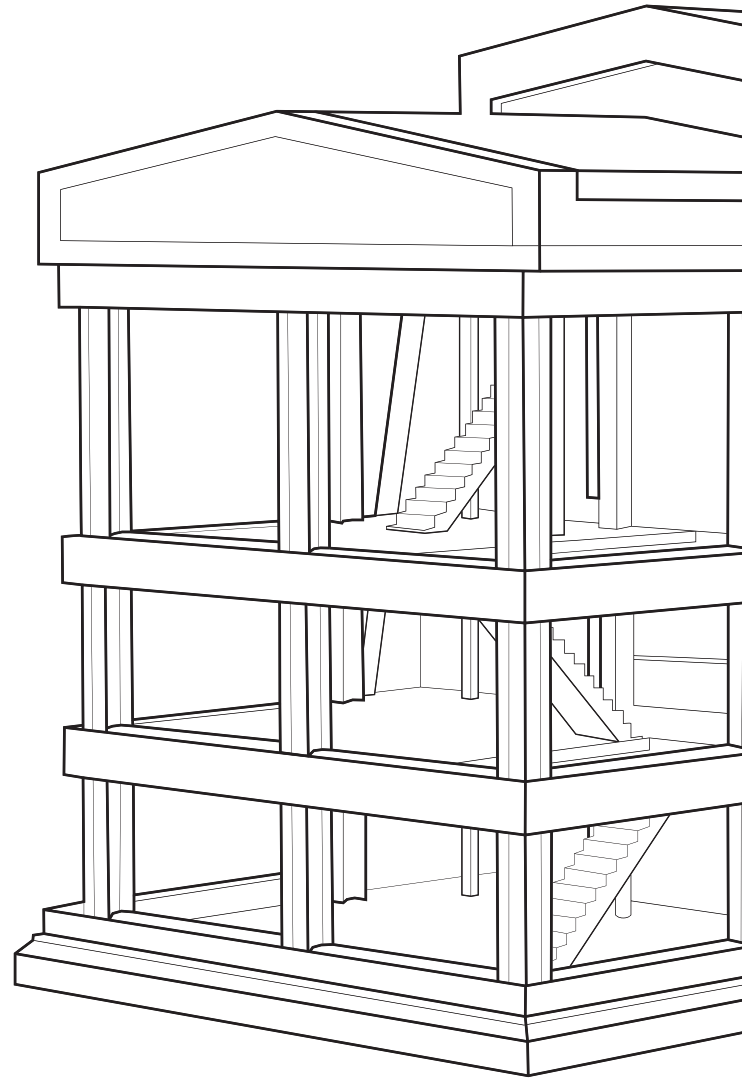
smart

professional.

**zortrax** inventure

# the **SMART** **ONE.**

Meet Zortrax Inventure, the must-have 3D printer for professionals who're looking for the top quality printer and do not accept any excuses. The device introduces you to a number of features that will make your work extremely easy and satisfying, like Dissolvable Support System, closed heated chamber, notification system, or dedicated software. Even the most complex objects can be brought to life. Print with incredible dimensional accuracy and consistent repeatability - smartly and professionally.



# DISSOLVE

## what's redundant

Together with Zortrax Inventure comes DSS, the Dissolvable Support System.

Starting now, you can print complex parts or entire moving mechanisms in one print. Based on water and soluble material, the DSS is a unique solution that lets you save even more time.

Just put the printed object into the water and find it support-free, with a smooth shape and no residue.



---

Model with Z-SUPPORT material

inventure

CARTRIDGE A  
Material type: Z-ULTRAT Plus Red



## all-in **CONTROL.**

What is the smartest thing about our 3D printer? Its ability to communicate and interact with the user. Zortrax Inventure has a built-in notification system that prevents errors and gives you full control over the printing process.



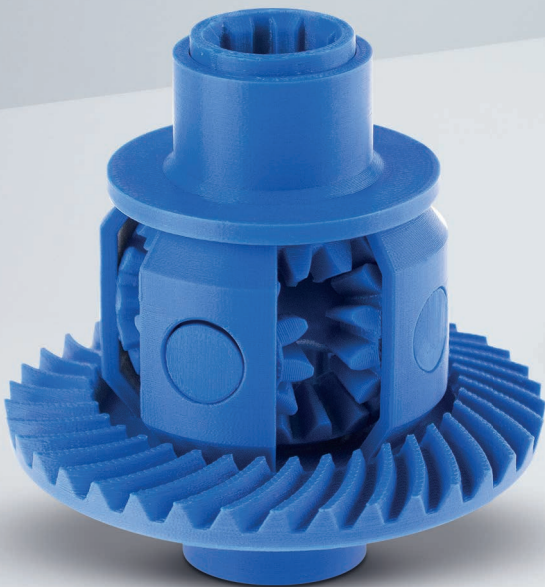
## plug-**IN.**

Having 3D printing materials in a cartridge makes the replacement easier and faster. You can have better control of material consumption level. Each cartridge has a special chip which sends information such as material type, color, and consumption level to the 3D printer.



# control **THE HEAT.**

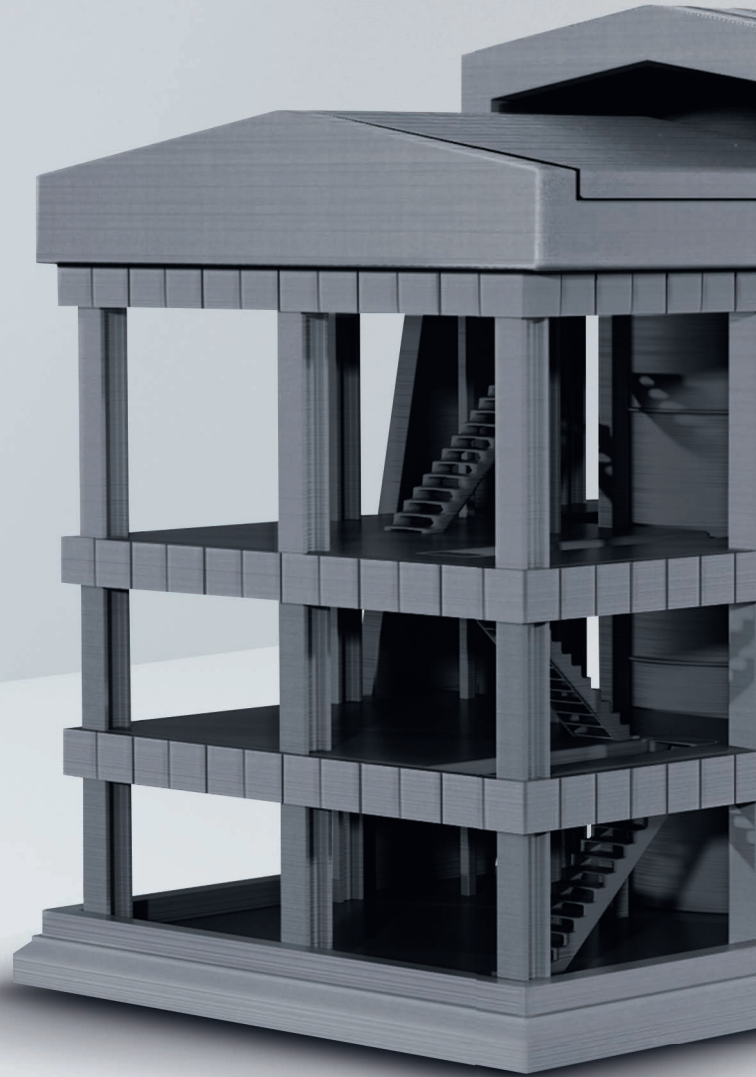
It's the right time to forget about warping and deformations. Zortrax Inventure closed heated chamber provides the constant temperature for your models during the printing process. Leave the external factors behind and enjoy flawless printing.



---

#### **A functional model of a differential mechanism.**

The dissolvable support material allows you to print a moving mechanism in one print.



---

Model with dissolved support, printed in one part on Zortrax Inventure.

# the factory **PROPERTIES.**

At last, a material perfect for accurate testing - Z-ULTRAT Plus, closed in a cartridge.

Enjoy the ability to create detailed models and complex shapes. Print end-use parts, functional prototypes or other objects that require high precision and durability or use it for accurate pre-production testing.



---

**A conceptual model of a camera lens part.** The Z-ULTRAT Plus material allows to mechanically finish and chemically treat the model's surface.

---

**A functional prototype of the plastic parts of a garden hose.**

Thanks to LPD Plus technology particular parts have high dimensional accuracy, so they can fit and work together in one mechanism.



# be a **COMPETITOR.**

Zortrax 3D printing solutions will give your company competitive edge on the market. Stop hesitating and get:

- accelerated and facilitated product development
- significantly lower prototyping costs
- increased production flexibility
- easy product customization

Discover the Zortrax Inventure at [www.zortrax.com](http://www.zortrax.com)

## Printing

<b>Technology</b>	LPD Plus – advanced technology with DSS system
<b>Build volume</b>	140 x 140 x 140 mm 5,5 x 5,5 x 5,5 in
<b>Resolution</b>	90-200 microns
<b>Material container</b>	Cartridge
<b>Wall thickness</b>	Optimal: 800 microns
<b>Resolution of single printable point</b>	in XY axis: 400 microns, in Z axis: 90-200 microns
<b>Material diameter</b>	1.75 mm (0.069 in)
<b>Nozzle diameter</b>	0.4 mm (0.015 in)
<b>Minimum single positioning</b>	1.5 microns
<b>Positioning precision (X/Y)</b>	1.5 microns
<b>Z-axis single step</b>	1.25 microns

## Temperature

<b>Extruder maximum temperature</b>	380°C (716°F)
<b>Heated chamber</b>	Yes
<b>Chamber maximum temperature</b>	90°C (194°F)
<b>Ambient operation temperature</b>	15°-35°C (60°-95°F)
<b>Storage temperature</b>	0°-35°C (32°-95°F)

## 3D Printer

<b>Support</b>	Dissolvable – printed from a different material than the model
<b>HEPA filter</b>	Yes
<b>Material consumption sensor</b>	Yes
<b>Chip with information about material (type, color, consumption)</b>	Yes

<b>Extruder</b>	printing with the main and the support material
<b>Connectivity</b>	SD Card (included)
<b>Available materials</b>	Z-ULTRAT Plus, Z-SUPPORT

## Electrical

<b>AC input</b>	110/240V ~ 2 A 50/60 Hz
<b>Power requirements</b>	24 V DC @ 11 A
<b>Power consumption</b>	160 W

## Software

<b>Software bundle</b>	Z-SUITE
<b>File types</b>	.stl, .obj, .dxf, .3mf
<b>Supports</b>	Mac OS X / Windows 7 and newer versions

## Physical Dimensions

	350 x 350 x 400 mm 13.7 x 13.7 x 15.7 in
--	---



# zortrax

office:

[office@zortrax.com](mailto:office@zortrax.com)

sales department:

[sales@zortrax.com](mailto:sales@zortrax.com)

technical support:

[support@zortrax.com](mailto:support@zortrax.com)

find a local Reseller: [zortrax.com/resellers](http://zortrax.com/resellers)

more info at: [zortrax.com](http://zortrax.com)

©2016 Zortrax S.A. All rights reserved.

'Zortrax', 'Zortrax M300', 'Zortrax M200', 'Zortrax Inventure', 'Z-ABS', 'Z-ULTRAT', 'Z-HIPS', 'Z-GLASS', 'Z-PCABS', 'Z-PETG', 'Z-ULTRAT Plus', 'Z-SUITE' are registered trademarks of Zortrax S.A.